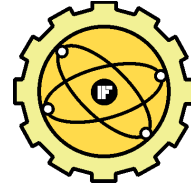




POLSKIE TOWARZYSTWO AKUSTYCZNE



KOMITET AKUSTYKI PAN



INSTYTUT FIZYKI POLITECHNIKI ŚLĄSKIEJ

57. Otwarte Seminarium z Akustyki

Tissue attenuation estimation from backscattered ultrasound using spatial compounding technique - preliminary results

Ziemowit KLIMONDA, Jerzy LITNIEWSKI, Andrzej NOWICKI
Institute of Fundamental Technological Research, Polish Academy of Science
ul. Pawinskiego 5B, 02-106, Warszawa,
e-mail: zklim@ippt.gov.pl

Abstract

The pathological states of biological tissues are often connected with attenuation changes. Thus, information about attenuating properties of tissue is valuable for the physician and could be useful in ultrasonic diagnosis. We are currently developing a technique for parametric imaging of attenuation and we intend to apply it for in vivo characterization of tissue. The attenuation estimation method based on the echoes mean frequency changes due to tissue attenuation dispersion is presented. The Doppler IQ technique was adopted to estimate the mean frequency directly from the raw RF data. The Singular Spectrum Analysis technique was used for the mean frequency trends extraction. These trends were converted into attenuation distribution and finally the parametric images were computed. In order to reduce variation of attenuation estimates the spatial compounding method was applied. Operation and accuracy of attenuation extracting procedure was verified by calculating the attenuation coefficient distribution using the data from the tissue phantom with uniform echogenicity but varying attenuation coefficient (DFS, Denmark).

1. INTRODUCTION

The ultrasonic imaging is non-invasive, popular and relatively inexpensive method of visualization of the body interior. The USG image consists of many lines; each of them corresponds to the echo envelope. Such imaging mode is called B mode. The B mode image reflects the distribution of the tissue reflectivity, that depends on acoustical impedance variations. However, the raw radio-frequency (RF) echoes contain information about the tissue properties that cannot be assessed with the signal envelope. The attenuation of ultrasound is one of such properties with potentially substantial importance in medical diagnostics. It has been demonstrated that pathological tissue differs in attenuating properties from the healthy one. Oosterveld et al. have shown that the slope of attenuation coefficient, combined with statistical parameters of image texture can be used to diagnose the diffuse liver disease [1]. Saijo et al. employed scanning acoustic microscope to measure five types of gastric cancer and indicated different attenuation coefficient and sound speed comparing to normal tissue [2]. Bigelow et al. investigated possibility of the prediction of the premature delivery based on the noninvasive ultrasonic attenuation determination [3]. In many other publications it has been reported that pathological processes can lead to changes in the mean attenuation coefficient that range from

several percent for cirrhotic human liver, through dozens percent for fatty human liver [4], or degenerated bovine articular cartilage [5] to over a hundred percent in case of porcine liver HIFU treatment in vivo [6] or two hundred percent for porcine kidney thermal coagulation [7]. These reports motivated us to consider the parametric imaging of the attenuation as a useful tool in medical diagnostic. There are two approaches to the estimation of the ultrasonic attenuation. The spectral difference technique that is based on a comparison of the power spectrum of backscattered signals before and after the wave propagation through the medium and the spectral shift method that uses the downshift of the pulse mean frequency caused by the frequency-dependent attenuation. In our approach the mean frequency (MF) is directly evaluated from the backscatter data by means of the correlation estimator. Mean frequency is highly variable due to the random character of the backscattering RF signals [8, 9]. In this work the Singular Spectrum Analysis (SSA) algorithm and the spatial compounding technique were used to extract the mean frequency trend and to decrease the random variance of the estimated attenuation profile. The data were collected from the tissue mimicking phantom using the commercial ultrasonic scanner equipped with the special research module capable to acquire RF data before envelope

detection.

4. METHODS

We assumed, that the attenuation in tissue can be described by the following model. The amplitude of the wave propagating in tissue decreases exponentially due to attenuation what can be expressed as

$$A = A_0 \exp(-\alpha x) \quad (1)$$

where A_0 – initial intensity, α - attenuation coefficient and x – wave path length. The attenuation coefficient α depends on frequency f and in the soft tissue it has the following form:

$$\alpha(f) = \alpha_1 \left(\frac{f}{f_1} \right)^n \quad (2)$$

where α_1 is the attenuation coefficient at the frequency f_1 (in the literature generally $f_1=1$ MHz) and n for the soft tissue is close to 1 [10]. Thus, the linear relation between attenuation coefficient in tissue and the wave frequency is often assumed. When a short ultrasonic pulse propagates within the homogenous medium the dispersion of the attenuation coefficient results in the shift of the pulse mean frequency (MF). To find estimates of the attenuation from ultrasonic echo signals we assume that the attenuation of tissue increases linearly with frequency and that the backscattered signals have the Gaussian shaped spectra (Gaussian pulses). Then, the MF shift ($f-f_0$) is given by [11, 12]

$$f - f_0 = \frac{\alpha \cdot \Delta x \cdot \sigma_0^2}{2} \quad (3)$$

where f_0 and f are MF before and after propagation respectively, σ_0^2 is the Gaussian variance of the pulse spectrum, Δx denotes penetrated distance and α is the attenuation coefficient. Gaussian pulse spectrum preserves the shape during propagation in linearly attenuating medium i.e. the σ_0^2 is constant, and the α can be calculated from the equation (3) as

$$\alpha = -\frac{2}{\sigma_0^2} \frac{\partial f}{\partial x} \quad (4)$$

The attenuation coefficient α is positive, thus MF along the propagation path i.e. the MF line always decrease monotonically with the penetration depth.

To determine the MF line we have applied the MF correlation estimator (I/Q algorithm). The estimator is defined by

$$MF = \frac{1}{2\pi T_s} a \tan \left(\frac{\sum_{i=1}^N Q(i)I(i+1) - Q(i+1)I(i)}{\sum_{i=1}^N I(i)I(i+1) + Q(i+1)Q(i)} \right) \quad (5)$$

where T_s is the sampling period and N is the estimator window length. The Q and I are quadrature and in-phase signal components. The N is very important parameter, because it is directly related to the resolution of the method. The Q and I are obtained by quadrature sampling technique. The quadrature sampling is often used in modern scanners and the correlation estimator is widely used in Doppler techniques [13].

The presented technique of attenuation estimation consists of four steps. First, the raw RF data are filtered with the filter that bandwidth corresponds to the bandwidth of the transducer. Next the estimator window moves along the filtered RF line and the MF values are determined. The MF line is created point by point. In ideal case, the attenuation (A) line could be enumerated directly from MF line using the eq. (4). Unfortunately, the real MF lines are highly variable and the direct use of eq. (4) results with the highly noised A lines, not suitable for the attenuation imaging. Thus, in the third step the reduction of the MF line random variability is required. Three techniques are used. First, the moving average filter averaging over adjacent MF lines in lateral direction is applied. Next the Singular Spectrum Analysis (SSA) trend extraction algorithm is employed. Finally the spatial compounding technique is used.

The SSA is relatively new technique of analysis of the time series. The aim of this technique is the decomposition of the input data series into the sum of components which can be interpret as the trend, oscillatory components and the noise (non-oscillatory components). The major applications of the SSA technique is the smoothing of the time series, finding the trend, forecasting and detection of the structural changes [14-20] The SSA is the model-free technique - there is no need to know a general function describing how the MF changes with the depth. Another useful feature of the SSA is its robustness to the outliers [21]. The SSA is easy to use – it needs only one parameter – the window length. Details of this technique can be found in the literature [22]. The application of SSA and the averaging of the scan lines limits the variations of the attenuation estimate, but it still suffers from errors. In this approach, the spatial compounding technique was used to increase accuracy of the attenuation estimate and to reduce its variations. The spatial compounding is often used to reduce speckles in standard B-mode images [23]. The method bases on averaging images obtained from different, but closely located scan planes. The variation of the scanning plane position can be realized by the slight modification of the imaging plane angle or by shifting the probe perpendicularly to the scan plane. In this paper the compounding technique that is often used in standard B-mode imaging was applied to the attenuation distribution imaging.

3. EXPERIMENTAL SETUP

The experimental setup consisted of the ultrasonic scanner ZONARE z.one ultra SmartCart System and the tissue mimicking phantom produced by Dansk Fantom Design. The scanner was equipped with linear VF13-5 probe. The pulse frequency was 5 MHz. The scanner was equipped with the special research module (IQscan) that enables an access to the unprocessed RF data. The RF data were

recorded during the scanning, transmitted to PC computer, and processed offline with the Matlab © software. The attenuation of the phantom background was equal 0.7 dB/(MHz·cm). It contained the cylindrical volume of the 1.5 cm diameter with the attenuation coefficient equal to 1.1 dB/(MHz·cm). The cylinder was localized at 5 cm depth and its echogenicity was similar to the background echogenicity. During imaging the scan plane was perpendicular to the cylinder axis. The compounding technique was realized by moving the probe along the cylinder axis and making successive scans with 1 mm intervals between scan planes. The number of scans was equal twelve. Each scan was processed using algorithm depicted in the methods section, to obtain attenuation estimate. The correlation estimator window and the SSA window length corresponded to 10 mm depth. The final attenuation image was created by averaging component estimates. Additionally, twelve RF scans of the phantom background with attenuation equal 0.7 dB/(MHz·cm) was recorded. This data were used to evaluate the coefficient $2/\sigma_0^2$ of equation (4).

4. RESULTS

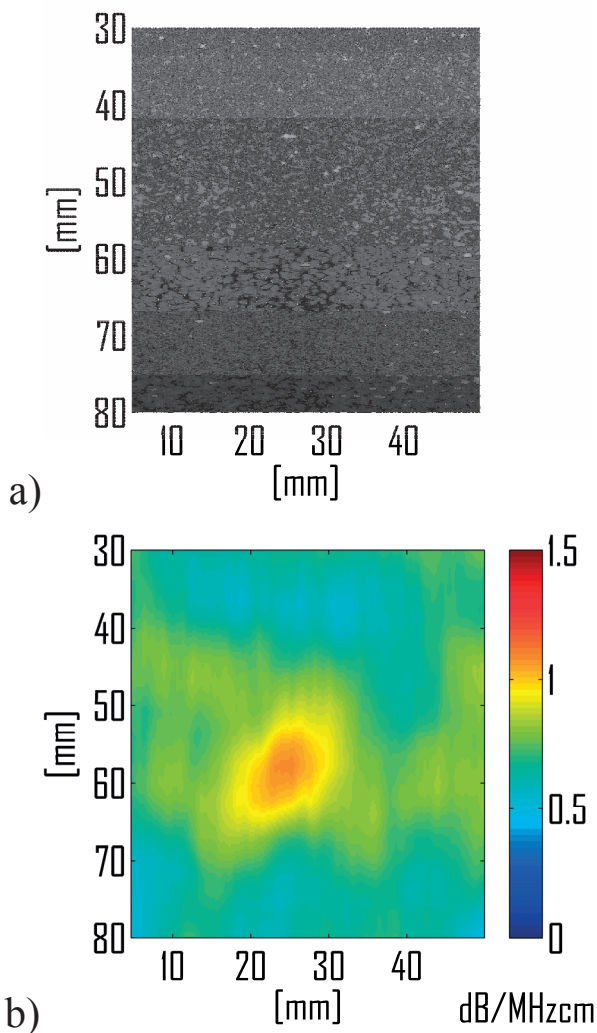


Fig. 1. The standard B-mode image (a) and the image of the attenuation distribution obtained with spatial compounding technique (b)

The figure 1 presents the comparison between the standard B-mode image and the attenuation image produced using spatial compounding. The volume with higher attenuation is localized in the centre of the scan. On the B-scan (Fig. 1a) the presence of the high attenuation area manifests by the "shadow" below this area but it is hardly visible. However, in the attenuation image (fig. 1b) this volume is clearly visible. The estimate matches the attenuation coefficients of the tissue phantom very well. The estimated values varies from 0.6 to 0.8 dB/MHz·cm and from 1.0 to 1.1 dB/MHz·cm in the background area and the centre of the high attenuation cylinder volume respectively.

The components of the compounded attenuation image are of worse quality, than the final estimate. The object is visible in four component images however strong noise is also present. The object is almost undetectable in the rest of the component images. The figure 2 presents two of them. The upper image (fig. 2a) is the best one of the four scans where the object is visible. The lower (fig. 2b) represents the group of images where the object is hardly visible.

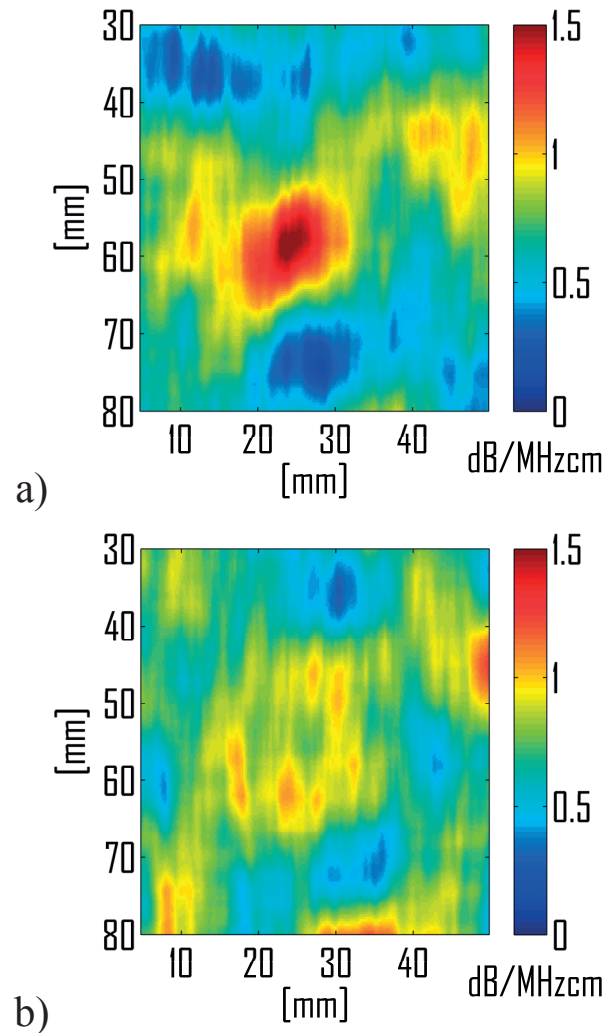


Fig. 2. Two components of the compounded attenuation image, the one with well visible object (a) and the one with the hardly visible object.

The values of estimated attenuation in fig 2a varies from 0.1 to 1.0 dB/MHz·cm and from 1.0 to 1.5 dB/MHz·cm in the background area and in the highly attenuating cylinder volume respectively.

5. CONCLUSIONS

The method of tissue attenuation estimation is presented. It is based on tracking the mean frequency changes of the backscattered signals. The results indicate, that the spatial compounding technique increases the precision of the method. The compounded estimate matches the attenuation values of the phantom well, while the most of the single scans don't. Even if the single scan provides the image of the high attenuating area, the estimate is inaccurate. The high attenuating area is hard to detect in the ordinary B-mode presentation, while in the attenuation image it is clearly visible. The attenuation images seems to be promising tool in medical diagnostics, however the precision of a single scan is often unsatisfactory. The presented results suggest that the spatial compounding technique is an effective procedure of increasing the precision of the attenuation estimates and reducing of the noise level.

REFERENCES

1. B. J. Oosterveld, J. M. Thijssen, P. C. Hartman, R. L. Romijn, G. J. Rosenbusch, *Ultrasound attenuation and texture analysis of diffuse liver disease: methods and preliminary results*, Phys. Med. Biol., **36(8)**, 1039-1064, (1991).
2. Y. Saijo, *High Frequency Acoustic Properties of Tumor Tissue. In: Ultrasonic Tissue Characterization*, Springer-Verlag Tokio, 217-230, Hong-Kong 1996.
3. T. A. Bigelow, B. L. Mcfarlin, W. D O'brien., M. L. Oelze, *In vivo ultrasonic attenuation slope estimates for detectiong cervical ripening in rats: Preliminary results*, Journal of Acoustical Society of America, **123(3)**, 1794-1800, (2008).
4. Z. F. Lu, J. Zagzebski, F. T Lee, *Ultrasound Backscatter and Attenuation in Human Liver With Diffuse Disease*, Ultrasound in Med. & Biol., **25(7)**, 1047-1054, (1999).
5. H. J. Nieminen, S. Saarakkala, M. S. Laasanen, J. Hirvonen, J. S. Jurvelin, J. Töyräs *Ultrasound Attenuation in Normal and Spontaneously Degenerated Articular Cartilage*, Ultrasound in Med. & Biol., **30(4)**, 493-500, (2004).
6. V. Zderic, A. Keshavarzi, A. M. Andrew, S. Vaezy, R. W. Martin, *Attenuation of Porcine Tissues In Vivo After High Intensity Ultrasound Treatment*, Ultrasound in Med. & Biol., **30(1)**, 61-66, (2004).
7. A. E. Worthington, M. D. Sherar, *Changes in Ultrasound Properties of Porcine Kidney Tissue During Heating*, Ultrasound in Med. & Biol., **27(5)**, 673-682, (2001).
8. Z. Klimonda, A. Nowicki, *Imaging of the mean frequency of the ultrasonic echoes*, Archives of Acoustics, **32(4)** (supplement), 77-80, (2007).
9. J. Ophir, M.A. Ghouse, L.A. Ferrari, *Attenuation estimation with the zero crossing technique: phantom studies*, Ultras. Imag., **7**, 122-132, (1985).
10. A. Nowicki, *Ultrasonic Diagnostics* [in Polish: Diagnostyka Ultradźwiękowa], MAKmed, 2000.
11. P. Laugier, G. Berger, M. Fink, J. Perrin, *Specular reflector noise: effect and correction for in vivo attenuation estimation*, Ultras. Imag., **7**, 277-292, (1985).
12. J. Litniewski, *Assessment of trabecular bone structure deterioration by ultrasound* [in Polish: Wykorzystanie fal ultradźwiękowych do oceny zmian struktury kości gąbczastej], Prace IPPT, 2006.
13. A. Nowicki, *Fundamentals of Doppler Ultrasonography* [in Polish: Podstawy Ultrasonografii Dopplerowskiej], PWN, 1995.
14. F. J. Alonso, J. M. Del Castillo, P. Pintado, *Application of singular spectrum analysis to the smoothing of raw kinematic signals*, Journal of Biomechanics, **38**, 1085-1092, (2005).
15. N. E. Golyandina, K. D. Usevich, I. V. Florinsky, *Filtering of Digital Terrain Models by Two-Dimensional Singular Spectrum Analysis, International*, Journal of Ecology & Development, **8(f07)**, 81-94, (2007).
16. H. Hassani, *Singular Spectrum Analysis: Methodology and Comparison*, Journal of Data Science, **5**, 239-257, (2007).
17. J. C. Moore, A. Grinsted, *Singular spectrum analysis and envelope detection: methods of enhancing the utility of ground-penetrating radar data*, Journal of Glaciology, **52(176)**, (2006).
18. D. H. Schoellhamer, *Singular spectrum analysis for time series with missing data*, Geophysical Research Letters, **28(16)**, 3187-3190, (2001).
19. F. Varadi, R. K. Ulrich, L. Bertello, C. J. Henney, *Random lag singular cross-spectrum analysis*, The Astrophysical Journal, **528(1)**, (2000).
20. R. Vautard, P. Yiou, M. Ghil, *Singular-spectrum analysis: a toolkit for short, noisy chaotic signals*, Physica D, **58**, 95-126, (1992).
21. T. Alexandrov, *A Method of Trend Extraction using Singular Spectrum Analysis*, REVSTAT Statistical Journal, **7(1)**, 1-22, (2009).
22. N. Golyandina, V. Nekrutkin, A. Ahigljavsky, *Analysis of time Series Structure: SSA and related techniques*, Chapman & Hall/CRC, 2001.
23. V. Behar, D. Adam, Z. Friedman, *A new method of spatial compounding imaging*, Ultrasonics, **41**, 377-384, (2003).